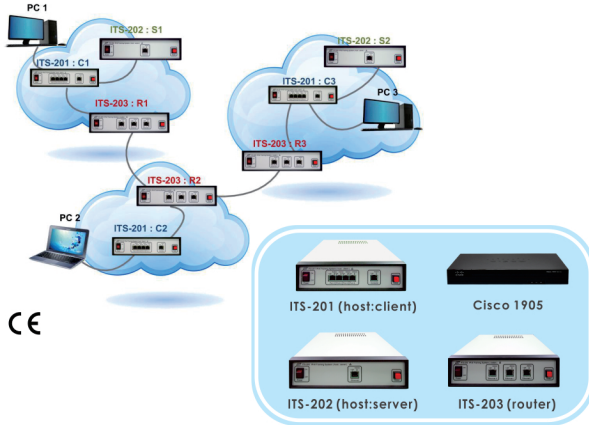


## ITS-200 series IPv6 Training System



Explosive growth in network device diversity and mobile communications, along with global adoption of networking technologies, have overwhelmed IPv4 and have driven the development of a next-generation Internet Protocol (IPv6).

In addition to providing more address space, IPv6 not only increases routing efficiency and network-layer security (built-in the IPsec encryption mechanism) but also creates new ways of addressing and more advanced QoS mechanisms, as the protocol develops.

The design purpose of ITS-200 series is to provide learners with a clear and comprehensive understanding of the protocol and operating behavior of the IPv6 specification. The complete system includes ITS-201 (host:client), ITS-202 (host:server) and ITS-203 (router). The interaction of these three devices can perform experiment as a group or stand alone.